



THE COTSWOLD LETTING AGENCY

BETTER BY FAR



Directions

Viewings

Viewings by arrangement only. Call 01993 684572 to make an appointment.

EPC Rating

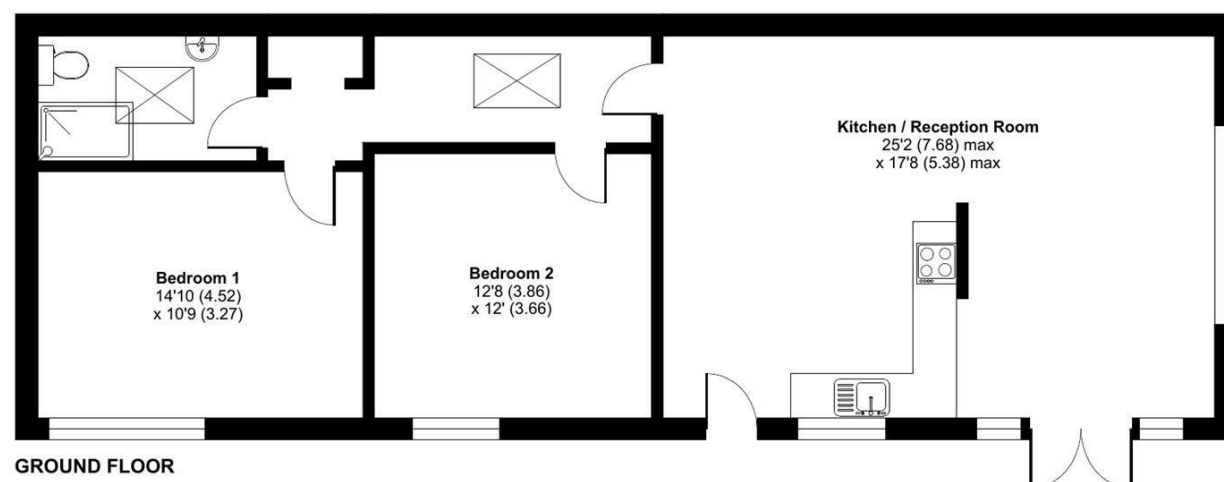
E

Energy Efficiency Rating		
	Current	Potential
Very energy efficient - lower running costs		
(92 plus) A		
(81-91) B		82
(69-80) C		
(55-68) D		
(39-54) E	41	
(21-38) F		
(1-20) G		
Not energy efficient - higher running costs		
England & Wales	EU Directive 2002/91/EC	

Lockhill Farm, Ratley, Banbury, OX15

Approximate Area = 930 sq ft / 86.3 sq m

For identification only - Not to scale



Lockhill Cottage, Lockhill Farm Featherbow Lane, Ratley, OX15 6DS

£2,195 Per Calendar Month

- 2 spacious bedrooms with tasteful furnishings
- Stunning views over rolling countryside
- Peaceful rural location with welcoming community
- Open-plan living area with gas fireplace
- Long private driveway and dedicated parking
- Nearby amenities including shops and post office in Tysoe and Kineton

Floor plan produced in accordance with RICS Property Measurement 2nd Edition, incorporating International Property Measurement Standards (IPMS2 Residential). © nitchcom 2025. Produced for The Cotswold Letting Agency Ltd REF: 1315083

Lockhill Cottage, Lockhill Farm Featherbow Lane, Ratley, CV15 6DS

Lockhill Cottage is set in Ratley, a charming and peaceful village nestled in the rolling South Warwickshire countryside, offering an idyllic rural lifestyle with excellent access to nearby towns and amenities. Just a 17-minute drive to Banbury and around 30 minutes from Moreton-in-Marsh, it's perfectly positioned for those seeking countryside living without feeling remote. These towns provide supermarkets, restaurants, Leisure facilities, and rail connections to London and Birmingham. The village itself enjoys a welcoming community, a traditional country pub (The Rose & Crown), and a network of scenic walking routes, including parts of the historic Edgehill escarpment. Families will appreciate nearby schools such as Tysoe C of E Primary School and a range of secondary options in Banbury. Additional amenities, including local shops and a post office, can be found in neighbouring villages like Tysoe and Kineton. With its combination of rural charm and practicality, Lockhill Cottage is an ideal base for anyone looking to enjoy the natural beauty of the countryside while remaining well connected.

 2

 1

 1

 E

Council Tax Band:

Lockhill Cottage offers a peaceful escape in the charming village of Ratley, surrounded by rolling countryside and scenic walking routes. This beautifully presented barn conversion combines cosy character with modern comfort, making it an ideal home for professionals, couples, or small families seeking a tranquil rural lifestyle.

Tastefully decorated and fully furnished, the property features two well-proportioned bedrooms and a family bathroom with a walk-in shower, along with a bright, open-plan living area that is flooded with natural light from numerous windows. A gas fire in the living room adds warmth and ambience, creating a welcoming space to relax.

Outside, the cottage enjoys incredible countryside views, a long private driveway, private parking, and a sense of seclusion while remaining conveniently located.

With its thoughtful interiors, modern amenities, and stunning setting, Lockhill Cottage offers comfort, convenience, and the very best of Cotswold living.

